



Baile del Santo

Popular de El Hierro

Arreglo: Abraham Gervasio Ramos Sánchez

Carrillón

Metalófono contralto

Xilófono contralto

Xilófono bajo



Baile del Santo

Arreglo: Abraham Gervasio Ramos Sánchez
Popular del Hierro

Introducción

Carrilón

Metalófono contralto

Xilófono contralto

Xilófono bajo

mf *mf*

9

Car.

Met. ctrl.

Xil. ctrl.

Xil. bajo

mf

17

Car.

Met. ctrl.

Xil. ctrl.

Xil. bajo

mf

25

Car.

Met. ctrl.

Xil. ctrl.

Xil. bajo

mf

2

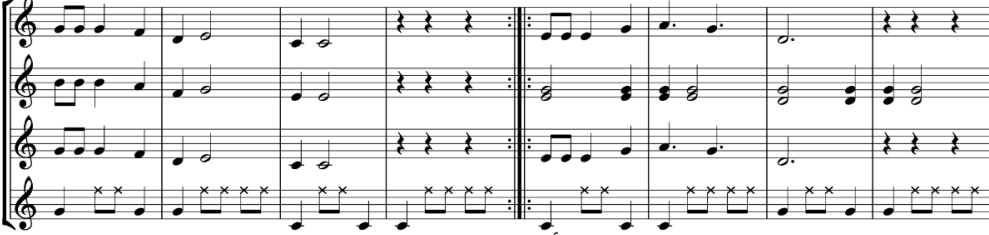
33

Car.

Met. ctrl.

Xil. ctrl.

Xil. bajo



mf

Detailed description: This block contains the musical score for measures 33 to 40. It features four staves: Car. (Carnations), Met. ctrl. (Metals), Xil. ctrl. (Xylophone), and Xil. bajo (Bass Xylophone). The Car. staff has a melodic line with eighth and quarter notes. The Met. ctrl. staff has a rhythmic accompaniment with eighth notes. The Xil. ctrl. staff has a melodic line similar to the Car. staff. The Xil. bajo staff has a rhythmic accompaniment with eighth notes and rests. A dynamic marking of *mf* is present at the end of the system.


41

Car.

Met. ctrl.

Xil. ctrl.

Xil. bajo



mf

Detailed description: This block contains the musical score for measures 41 to 46. It features the same four staves as the previous system. The Car. staff continues with a melodic line. The Met. ctrl. staff has a rhythmic accompaniment. The Xil. ctrl. staff has a melodic line. The Xil. bajo staff has a rhythmic accompaniment. A dynamic marking of *mf* is present at the end of the system.

47

Car.

Met. ctrl.

Xil. ctrl.

Xil. bajo



1.

Detailed description: This block contains the musical score for measures 47 to 54. It features the same four staves. The Car. staff has a melodic line with a first ending bracket over measures 51-52. The Met. ctrl. staff has a rhythmic accompaniment. The Xil. ctrl. staff has a melodic line. The Xil. bajo staff has a rhythmic accompaniment. A first ending bracket labeled '1.' is present over measures 51-52.



Baile del Santo

Carrillón

Arreglo: Abraham Gervasio Ramos Sánchez
Popular del Hierro

Introducción

4 8

17 8

31

39

47 1.



Baile del Santo

Metalófono contralto

Arreglo: Abraham Gervasio Ramos Sánchez
Popular del Hierro

Introducción

4 8

17

25

33

41

48

1.

Detailed description: The musical score is written for a contralto metallophone in 2/4 time. It begins with an 'Introducción' section consisting of two measures of whole rests, labeled '4' and '8'. The main melody starts at measure 17. The score is divided into six systems of music. The first system (measures 17-24) contains a melodic line with eighth and quarter notes. The second system (measures 25-32) continues the melody. The third system (measures 33-40) features a melodic line with a final measure of a whole rest. The fourth system (measures 41-47) consists of a series of chords. The fifth system (measures 48-55) returns to a melodic line, with a first ending bracket over measures 50-54. The piece concludes with a double bar line at the end of measure 55.

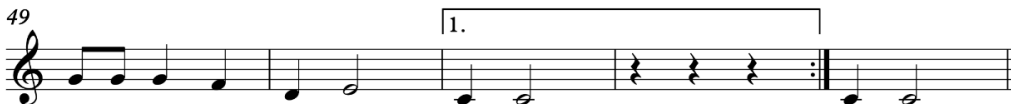


Baile del Santo

Xilófono contralto

Arreglo: Abraham Gervasio Ramos Sánchez
Popular del Hierro

Introducción





Baile del Santo

Xilófono bajo

Arreglo: Abraham Gervasio Ramos Sánchez
Popular del Hierro

Introducción

